

# SUMMERSWEET PLACE COTTAGES

THE CROSSING DISTRICT AT WATERCOLOR

*Presented by Huff Development*



water·color<sup>®</sup>  
*A Southern Coastal Landscape*

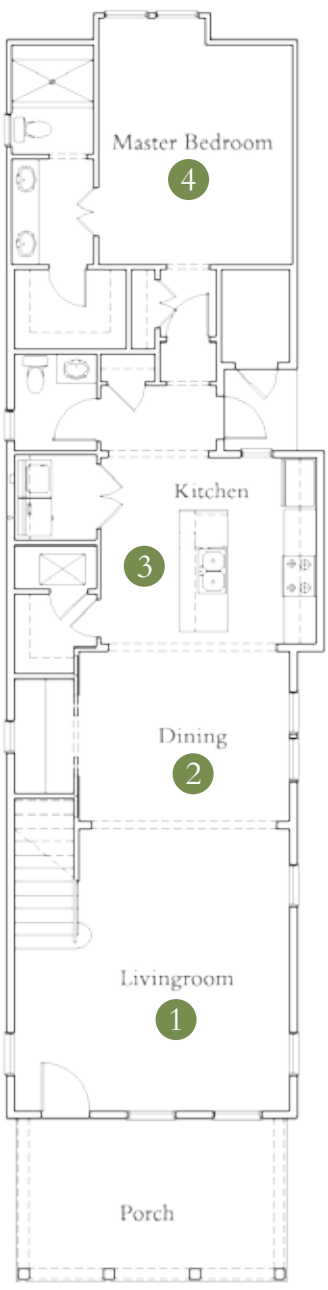
PLAN A

SUMMERSWEET PLACE COTTAGES | PLAN A

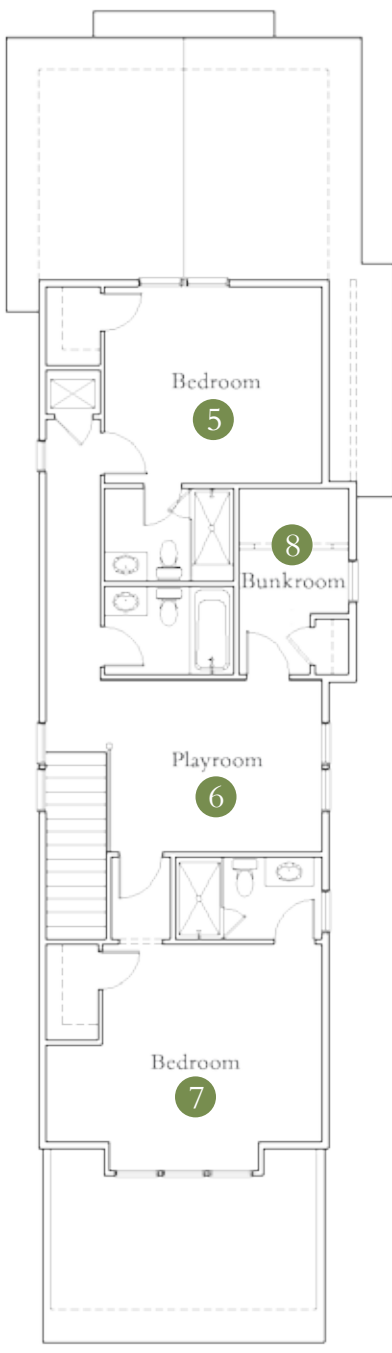
ROOM DIMENSIONS	3 BEDROOMS   3.5 BATHS   2 STORIES	
1 - 17'6" x 17'0"    5 - 12'3" x 13'5"	<i>Huff Development</i>	
2 - 10'6" x 13'3"    6 - 11' x 14'0"	SQUARE FOOTAGE	
3 - 11'6" x 13'3"    7 - 14' x 17'0"	Conditioned 2,270	
4 - 15'4" x 12'0"    8 - 11'6" x 7'0"	Porches 170	
	Total 2,440	



FIRST FLOOR



SECOND FLOOR



©2009 The St. Joe Company. St. Joe Community Sales, Inc., Licensed Real Estate Broker. "JOE", "St. Joe", "WaterColor," and the "Taking Flight" design are service marks of The St. Joe Company. Access to and rights to use recreational amenities within the development including Origins Golf Course may require a purchase of a separate membership and may be subject to payment of use fees, membership requirements, rules or other limitations which are subject to change. This does not constitute an offer to sell property. This is not intended to be an offer to sell nor a solicitation of offers to buy real estate in the listed communities by residents of Connecticut, Hawaii, Idaho, Illinois, New York, New Jersey, and Oregon, unless registered or exemptions are available, or in any other jurisdiction where prohibited by law. Prices subject to change without notice.



**These homes are built by Huff Development which is an independent, third party not affiliated with The St. Joe Company. The St. Joe Company does not guaranty the obligations of unaffiliated builders who build homes in WaterColor.**